

## Mezzanine Inspection Report

Date: 01/14/15	Station Name: D08 Stadium Armory South	Mezzanine #: 062	Completed By: Mike Butler
----------------	--	------------------	---------------------------

### Summary

Scoping and pull string installation was completed in accordance with the scope of work. All ducts are in good condition and not at capacity.

- Video scoping and pull string installation completed in Upper and Lower Faregate Comm. ducts; no obstructions were found and duct is not at capacity.
- Video scoping completed in Upper and Lower Faregate Power ducts; no obstructions were found and duct is not at capacity.
- Video scoping and pull string installation completed in power duct between Kiosk and AFC Panel; no obstructions were found and duct is not at capacity.

### Scoping of Faregate Array(s)

Task	Yes/No	Notes
<b>Communications Duct – Upper Faregate Array (4 faregates)</b>		
Was video scoping completed for the entire duct run?	Yes	Refer to "WMATA Stadium Armory South Comm. Upper Faregate Video.avi"
Were pull strings installed at all faregates in the array?	Yes	
Were there any obstructions or blockages? Provide details of type and specific location.	No	
Is the duct at capacity? Provide additional details about the dimensions of ducts and number of wires.	No	6" walker duct with less than 10 wires
<b>Communications Duct – Lower Faregate Array (4 faregates)</b>		
Was video scoping completed for the entire duct run?	Yes	Refer to "WMATA Stadium Armory South Comm. Lower Faregate Video.avi"
Were pull strings installed at all faregates in the array?	Yes	
Were there any obstructions or blockages? Provide details of type and specific location.	No	
Is the duct at capacity? Provide additional details about the dimensions of ducts and number of wires.	No	6" walker duct with less than 10 wires
<b>Power Duct - Upper Faregate Array (4 faregates)</b>		
Was video scoping completed for the entire duct run?	Yes	Refer to "WMATA Stadium Armory South Power Upper Faregate Video.avi"
Were there any obstructions or blockages? Provide details of type and specific location.	No	
Is the duct at capacity? Provide additional details about the dimensions of ducts and number of wires.	No	6" walker duct with less than 12 wires
<b>Power Duct - Lower Faregate Array (4 faregates)</b>		
Was video scoping completed for the entire duct run?	Yes	Refer to "WMATA Stadium Armory South Power Lower Faregate Video.avi"
Were there any obstructions or blockages? Provide details of type and specific location.	No	
Is the duct at capacity? Provide additional details about the dimensions of ducts and number of wires.	No	6" walker duct with less than 12 wires


Scoping of Power Duct - Kiosk to AFC Panel		
Task	Yes/No	Notes
<b>Kiosk to AFC Panel SMF (Distance: 80')</b>		
Was video scoping completed for the entire duct / conduit run?	Yes	Refer to "WMATA Stadium Armory South Power Kiosk to AFC Panel Video.avi"
Was pull string installed?	Yes	
Were there any obstructions or blockages? Provide details of type and specific location.	No	
Is the duct / conduit at capacity? Provide additional details about the dimensions of duct / conduit and number of wires.	No	6" walker duct with less than 10 wires
<b>Observations / Issues / Next Steps</b>		
- The power duct run between the Kiosk and AFC Panel is approximately 80' (refer to AFC as-built drawing).		
<b>Sign Off</b>		
	<b>GFP Representative</b>	<b>WMATA PRGM</b>
<b>Name:</b>	Mike Butler	
<b>Signature:</b>		
<b>Date:</b>	01/16/15	

Photo #1 – Faregate arrays and existing power duct run from Kiosk on mezzanine level

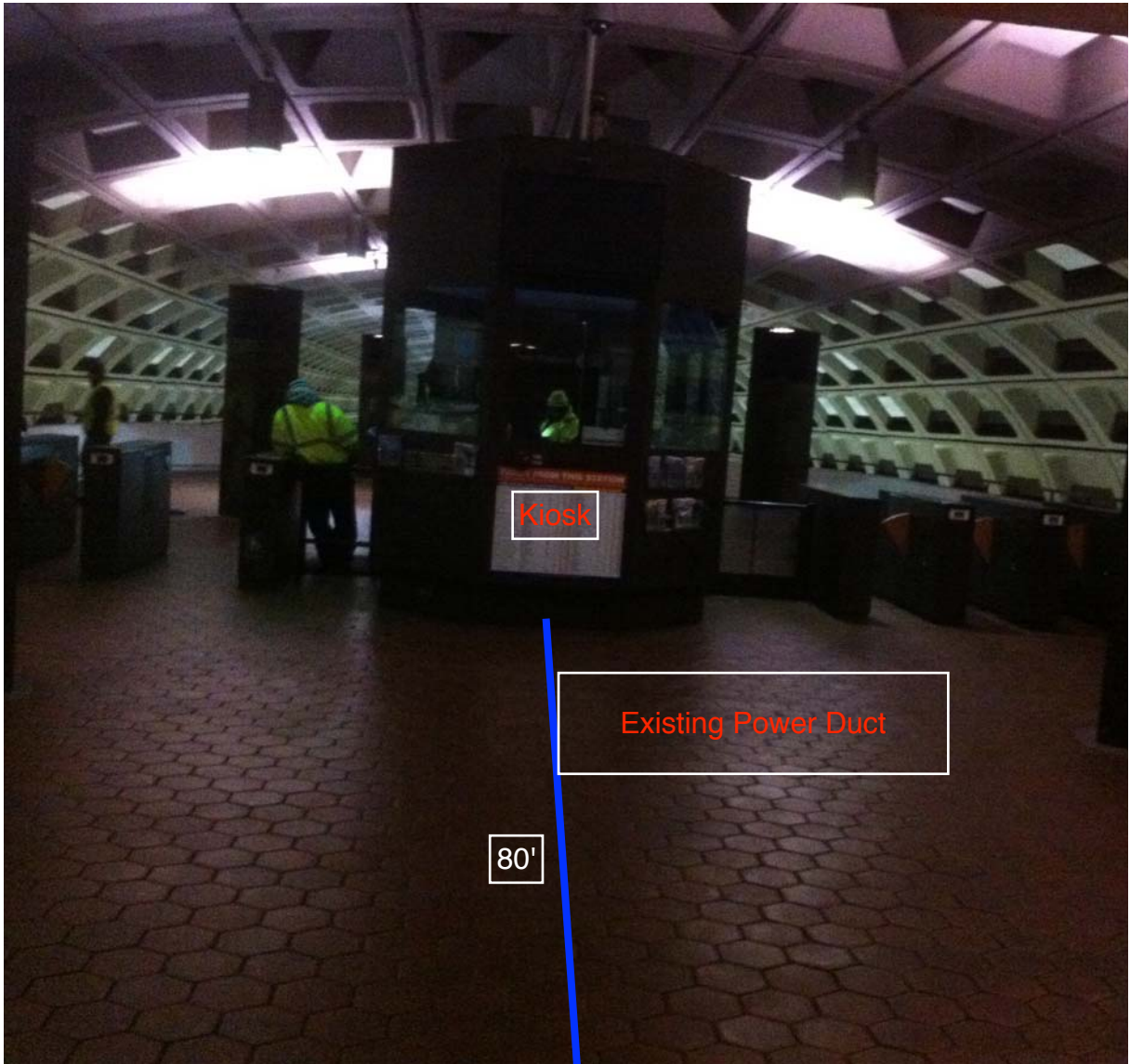
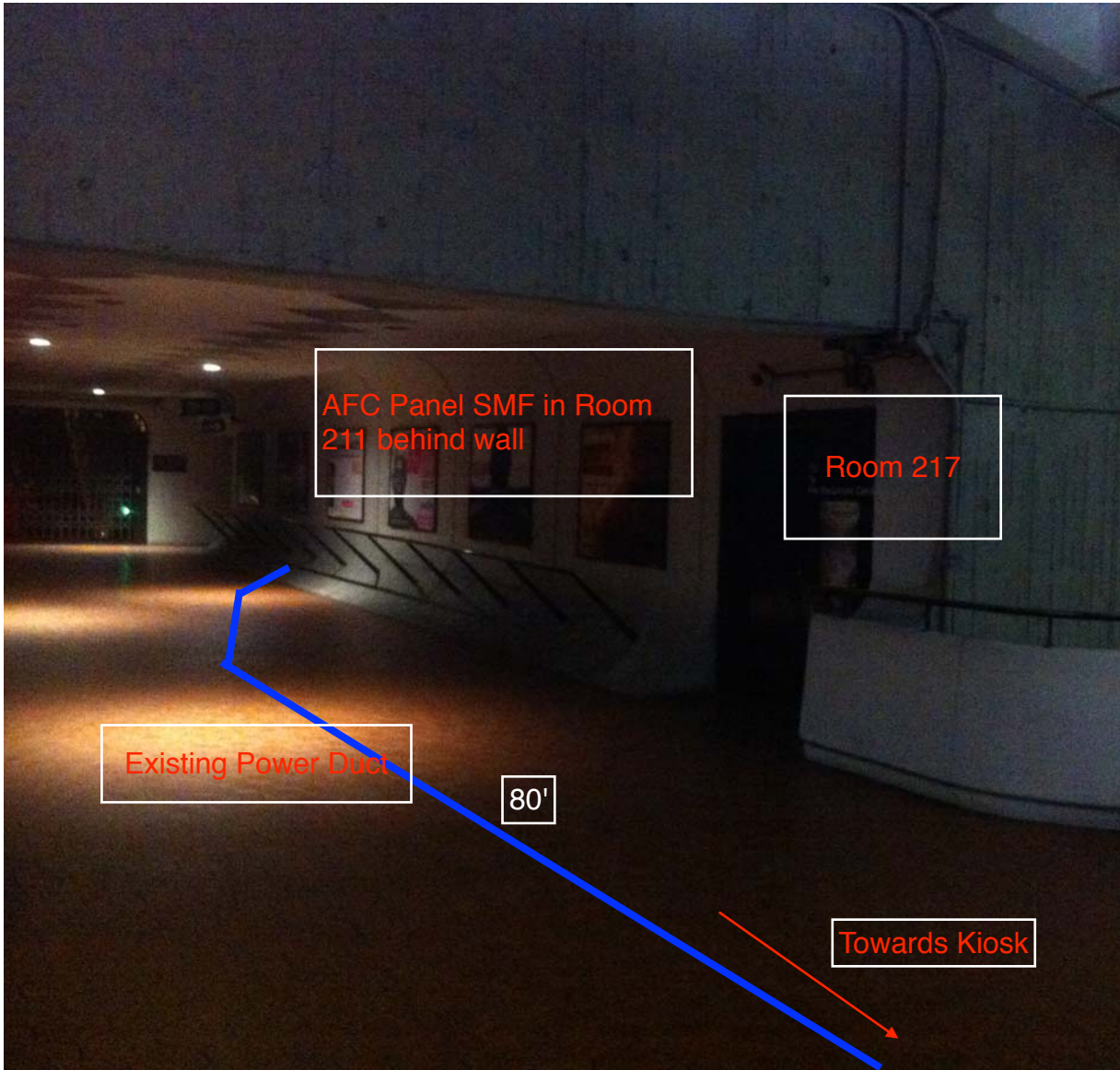


Photo #2 – Existing power duct run from Kiosk towards AFC Panel on mezzanine level



NOTES:

ALL INFORMATION CONCERNING DUCTS AND CONDUITS IS BASED ON INFORMATION SUPPLIED TO CUBIC WESTERN DATA BY WMATA.

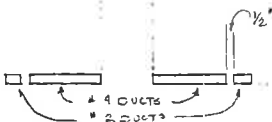
FC - MACHINE INVENTORY IS DEPICTED ON THIS DRAWING

THE MINIMUM OPERATIONAL MACHINE INVENTORY IS REFERENCED ON THIS DRAWING BY THE "X" DRAW THRU THE MACHINE

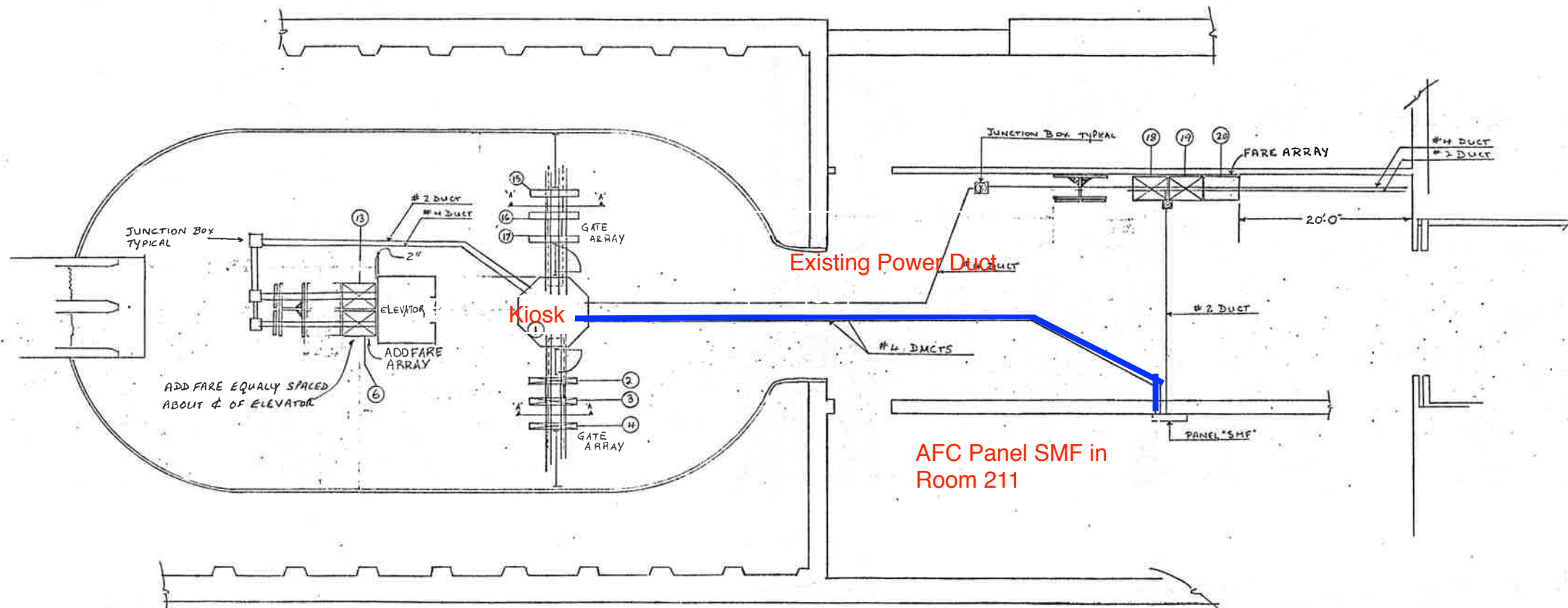
FOR AS BUILT CONDITIONS SEE SHEET 2.

OR REF. DWGS SEE SUPPORT DOCUMENT PACKAGE FOR THIS MEZZANINE

REVISIONS		
DESCRIPTION	DATE	APVD
AS-BUILT DRAWING REVISION A	7-13-77	APVD



VIEW "A-A"



PRIORITY REQUESTS ARE HEREBY GIVEN FOR ESCALATORS AND THE ELEVATORS THAT RUNS FROM THE STREET LEVEL TO THE MEZZANINE

2- INSTALLATION PLAN  
(AS BUILT CONDITION)

WASHINGTON METROPOLITAN AREA TRANSIT AUTHORITY

CONTRACT NUMBER 122007A		CUBIC WESTERN DATA A subsidiary of Cubic Corporation 5650 KEARNY MESA ROAD • POST OFFICE BOX 80787 • SAN DIEGO, CA 92138	
REL ENGRG DESIGN CHECK DRAWN		STADIUM ARMORY STATION SOUTH MEZZANINE AFC MACHINES	
DESIGN ACTIVITY APPROVAL APPROVED	SIZE D	DRAWING NUMBER 926-0396	REV (62)
11/18/76	11/21/76	SCALE 1/8" = 1'-0"	SHEET 2 OF 2

REFERENCE DRAWINGS USED  
 EIGHTH FLOOR PLAN  
 BEHIND BEHIND  
 AND BEHIND

## Mezzanine Inspection Report

Date: 02/05/15	Station Name: D08 Stadium Armory North	Mezzanine #: 063	Completed By: Mike Butler
----------------	--	------------------	---------------------------

### Summary

All video scoping and pull string installation was completed successfully at this mezzanine. The following work was completed:

- Video scoping and pull string installation completed for comm. duct in upper faregate array.
- Video scoping and pull string installation completed for comm. duct in lower faregate array.
- Video scoping completed for power duct in upper faregate array.
- Video scoping completed for power duct in lower faregate array.
- Video scoping and pull string installation completed in power duct between Kiosk and Handhole.
- Video scoping and pull string installation completed in power duct between Handhole and AFC Panel.

### Scoping of Faregate Array(s)

Task	Yes/No	Notes
<b>Communications Duct – Upper Faregate Array (8-gates)</b>		
Was video scoping completed for the entire duct run?	Yes	Refer to "WMATA Stadium Armory North 6inch Upper Comm Faregate.avi"
Were pull strings installed at all faregates in the array?	Yes	
Were there any obstructions or blockages? Provide details of type and specific location.	No	
Is the duct at capacity? Provide additional details about the dimensions of ducts and number of wires.	No	6" walker duct with less than 15 wires.
<b>Communications Duct - Lower Faregate Array (8-gates)</b>		
Was video scoping completed for the entire duct run?	Yes	Refer to "WMATA Stadium Armory North 6inch Lower Comm Faregate.avi"
Were pull strings installed at all faregates in the array?	Yes	
Were there any obstructions or blockages? Provide details of type and specific location.	No	
Is the duct at capacity? Provide additional details about the dimensions of ducts and number of wires.	No	6" walker duct with less than 15 wires.
<b>Power Duct - Upper Faregate Array (8-gates)</b>		
Was video scoping completed for the entire duct run?	Yes	Refer to "WMATA Stadium Armory North 6inch Upper Power Faregate.avi"
Were there any obstructions or blockages? Provide details of type and specific location.	No	
Is the duct at capacity? Provide additional details about the dimensions of ducts and number of wires.	No	6" walker duct with less than 15 wires.
<b>Power Duct - Lower Faregate Array (8-gates)</b>		
Was video scoping completed for the entire duct run?	Yes	Refer to "WMATA Stadium Armory North 6inch Lower Power Faregate.avi"
Were there any obstructions or blockages? Provide details of type and specific location.	No	
Is the duct at capacity? Provide additional details about the dimensions of ducts and number of wires.	No	6" walker duct with less than 15 wires.


Scoping of Power Duct - Kiosk to AFC Panel		
Task	Yes/No	Notes
<b>Kiosk to Handhole (Distance: 50')</b>		
Was video scoping completed for the entire duct / conduit run?	Yes	Refer to "WMATA Stadium Armory North 6inch Power HH to Kiosk then HH to 90at AFC Panel (1).avi"
Was pull string installed?	Yes	
Were there any obstructions or blockages? Provide details of type and specific location.	No	
Is the duct / conduit at capacity? Provide additional details about the dimensions of duct / conduit and number of wires.	No	6" walker duct with less than 12 wires.
<b>Handhole to AFC Panel (Distance: 10')</b>		
Was video scoping completed for the entire duct / conduit run?	No	Refer to "WMATA Stadium Armory North 6inch Power HH to Kiosk then HH to 90at AFC Panel (1).avi". Camera could not get past 90-deg bend below AFC Panel.
Was pull string installed?	Yes	
Were there any obstructions or blockages? Provide details of type and specific location.	No	
Is the duct / conduit at capacity? Provide additional details about the dimensions of duct / conduit and number of wires.	No	6" walker duct with less than 12 wires.
<b>Observations / Issues / Next Steps</b>		
<ul style="list-style-type: none"> <li>- Total distance of power duct between Kiosk and AFC Panel is 60'.</li> <li>- Handhole and AFC Panel are both located in Room 212.</li> </ul>		
<b>Sign Off</b>		
	<b>GFP Representative</b>	<b>WMATA PRGM</b>
<b>Name:</b>	Mike Butler	
<b>Signature:</b>		
<b>Date:</b>	03/05/15	

Photo #1 – Existing duct on mezzanine floor.

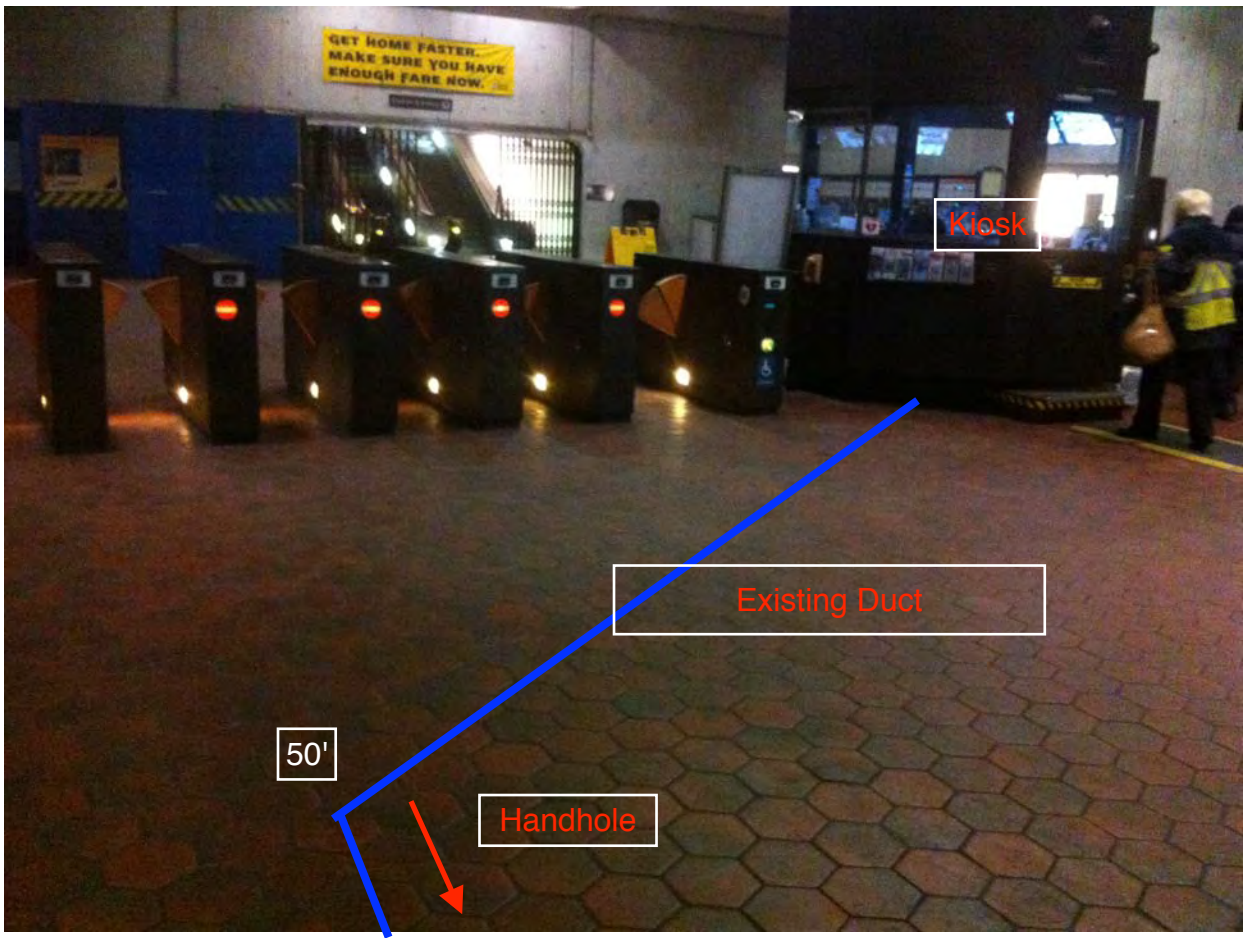


Photo #2 – Handhole in Room 212

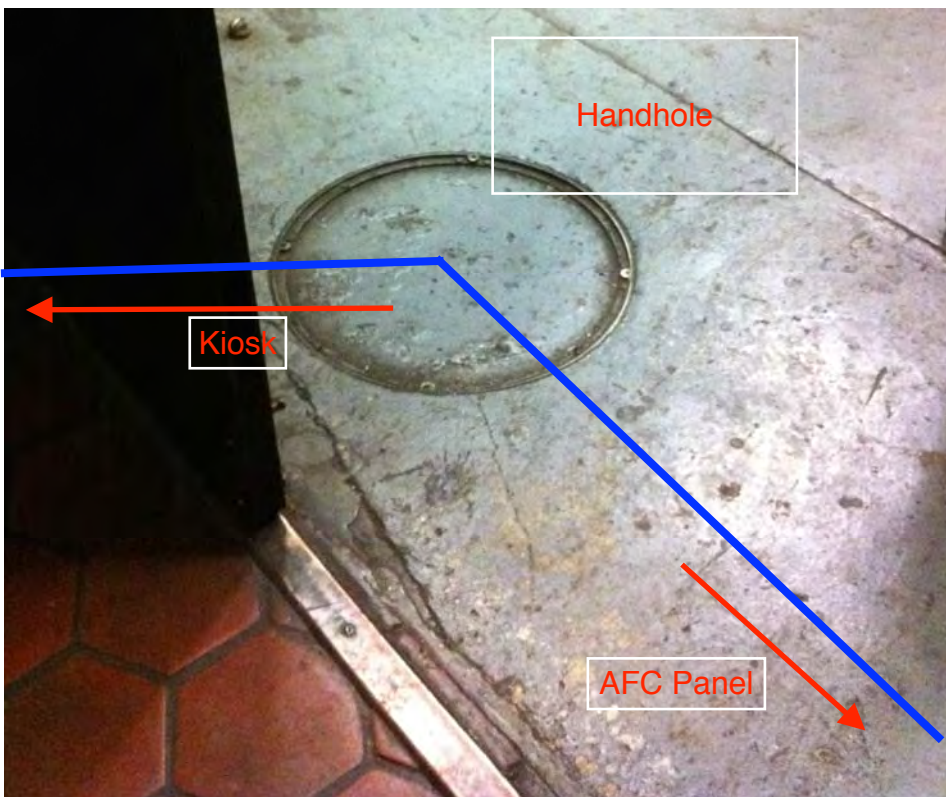
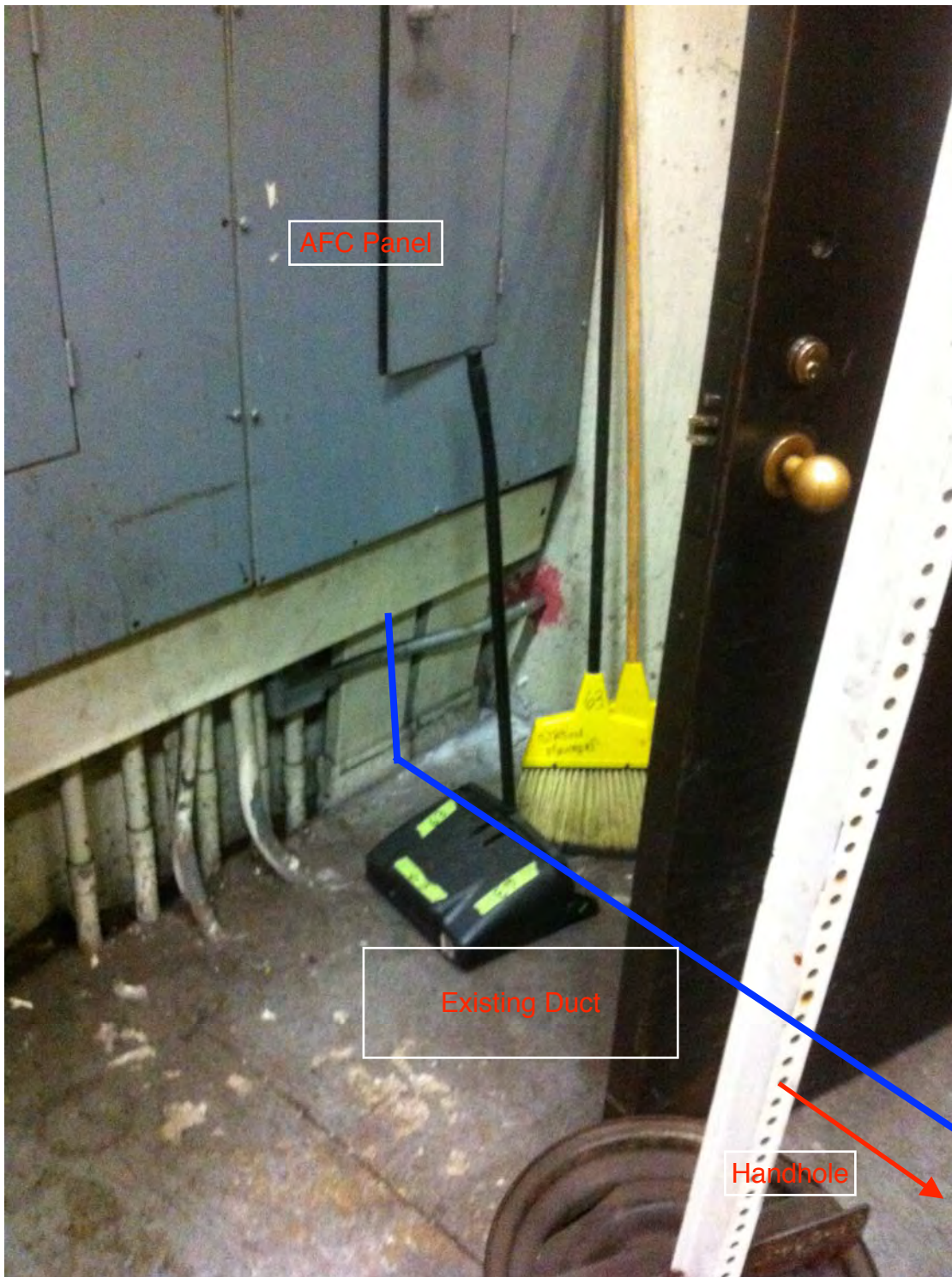




Photo #3 – AFC Panel in Room 212



**NOTES:**

ALL INFORMATION CONCERNING DUCTS AND PANDUCTS IS BASED ON INFORMATION SUPPLIED TO CUBIC WESTERN DATA BY WMATA.

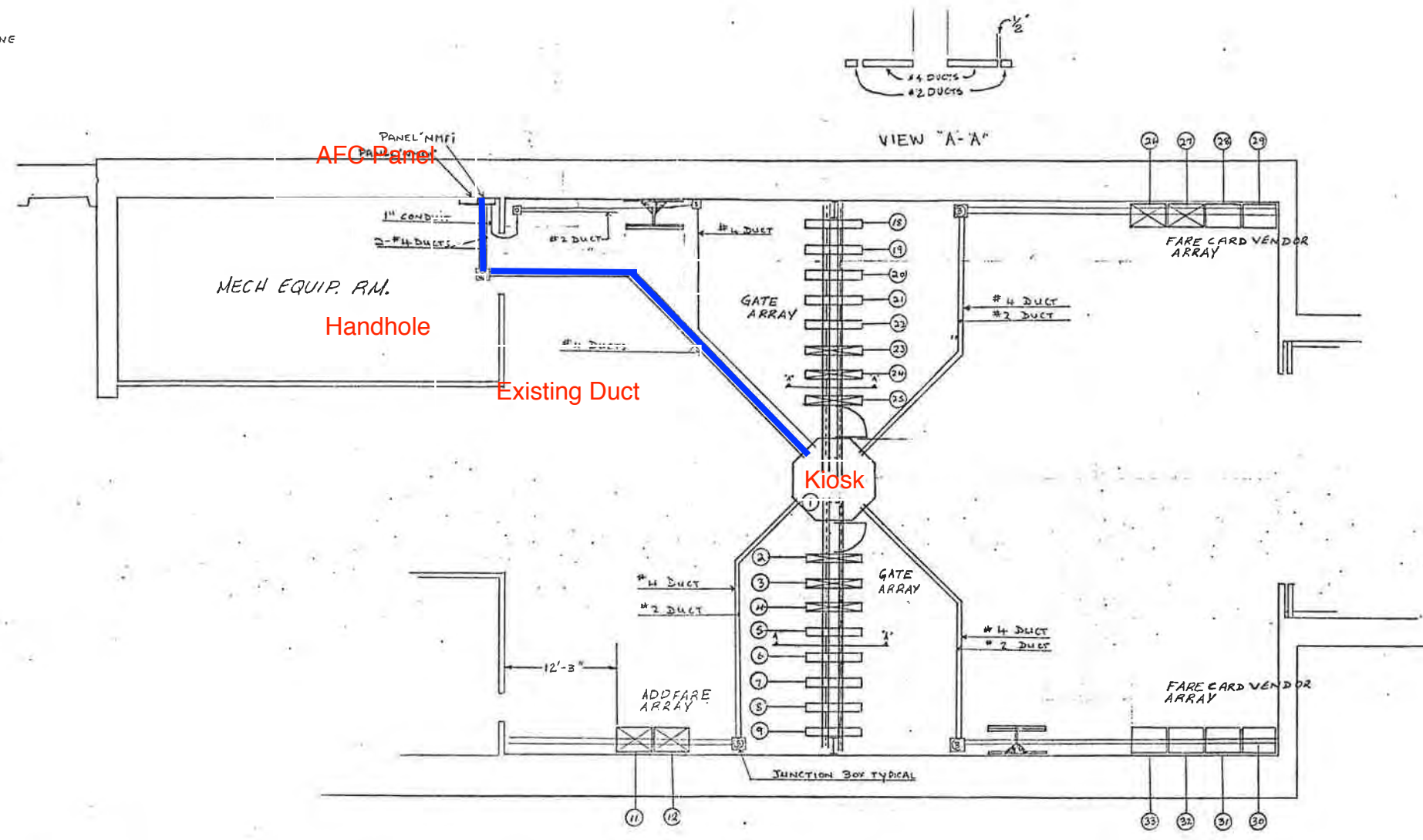
TOT MACHINE INVENTORY IS DEPICTED ON THIS DRAWING

THE MINIMUM OPERATIONAL MACHINE INVENTORY IS REFERENCED ON THIS DRAWING BY THE "X" DRAWN THRU THE MACHINE

FOR AS BUILT CONDITIONS SEE SHEET 2.

FOR REF. DWG'S SEE SUPPORT DOCUMENT PACKAGE FOR THIS MEZZANINE

REVISIONS		
DESCRIPTION	DATE	APVD
AS BUILT DRAWING REVISION 'A'	7-13-77	JB



PRIORITY REQUESTS ARE HEREBY GIVEN FOR ESCALATORS AND THE ELEVATORS THAT RUNS FROM THE STREET LEVEL TO THE MEZZANINE

1-INSTALLATION PLAN  
(AS BUILT CONDITION)

**WASHINGTON METROPOLITAN AREA TRANSIT AUTHORITY**

CONTRACT NUMBER 22007A		<b>CUBIC WESTERN DATA</b> <small>A Subsidiary of Cubic Corporation 3650 KEARNY MESA ROAD • POST OFFICE BOX 80787 • SAN DIEGO, CA 92128</small>	
STADIUM ARMORY STATION NORTH MEZZANINE AFC MACHINES		DRAWING NUMBER 926-0396 <b>63</b>	
REL ENGRG DESIGN CHECK DRAWN	DESIGN ACTIVITY APPROVAL APPROVED 4/11/78	SIZE SCALE 1/8" = 1'-0"	SHEET 1 OF 2

REFERENCED DRAWINGS  
 ELECTRICAL HOPIKRY  
 ELECTRICAL NETWORK  
 AND MECHANICAL

## Mezzanine Inspection Report (Scoping)

Date: 12/05/15	Station Name: D09 Minnesota Avenue	Mezzanine #: 064	Completed By: Mike Butler
<b>Summary</b>			
<p>The upper and lower faregate arrays were scoped and pull strings were installed in communication ducts. The video scoping and pull string installation was successfully completed in the power conduit between the Kiosk and AFC Panel.</p> <p>Scanning is not required at this mezzanine.</p>			
<b>Scoping of Faregate Array(s)</b>			
Task	Yes/No	Notes	
<b>Communications Duct – Upper Faregate Array (4 gates)</b>			
Was video scoping completed for the entire duct run?	Yes	Refer to "WMATA Minnesota Ave 3inch Comm Upper Faregate Video.avi"	
Were pull strings installed at all faregates in the array?	Yes		
Were there any obstructions or blockages? Provide details of type and specific location.	No	Some corrosion evident.	
Is the duct at capacity? Provide additional details about the dimensions of ducts and number of wires.	No	3" walker duct, not at capacity (< 12 wires).	
<b>Communications Duct - Lower Faregate Array (3 gates)</b>			
Was video scoping completed for the entire duct run?	Yes	Refer to "WMATA Minnesota Ave 3inch Lower Comm Faregate Video.avi"	
Were pull strings installed at all faregates in the array?	Yes		
Were there any obstructions or blockages? Provide details of type and specific location.	No	Some corrosion evident.	
Is the duct at capacity? Provide additional details about the dimensions of ducts and number of wires.	No	3" walker duct, not at capacity (< 12 wires).	
<b>Power Duct - Upper Faregate Array (4 gates)</b>			
Was video scoping completed for the entire duct run?	Yes	Refer to "WMATA Minnesota Ave 3inch Power Upper Faregate Video.avi"	
Were there any obstructions or blockages? Provide details of type and specific location.	No	Some corrosion and debris evident.	
Is the duct at capacity? Provide additional details about the dimensions of ducts and number of wires.	No	6" walker duct, not at capacity (< 10 wires).	
<b>Power Duct - Lower Faregate Array (3 gates)</b>			
Was video scoping completed for the entire duct run?	Yes	Refer to "WMATA Minnesota Ave 3inch Lower Power Faregate Video.avi"	
Were there any obstructions or blockages? Provide details of type and specific location.	No	Some corrosion and debris evident.	
Is the duct at capacity? Provide additional details about the dimensions of ducts and number of wires.	No	6" walker duct, not at capacity (< 10 wires).	



Photo #1 – Mezzanine Layout



